



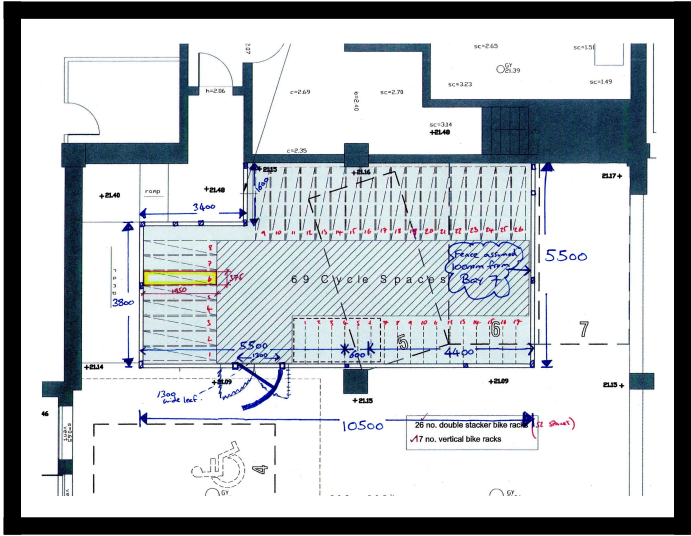
The BDS Bike Cage

Ex. VAT: £2,807.00 **TOTAL**
Inc. VAT: £3,368.40

*Base price, not including any custom options.

Product Images





Description

The BDS Bike Cage is a great product that allows you to easily set up a designated space just for bikes and bike storage. Fencing off an area just for the use of cyclists can add to the security of your bike storage enclosure and can contribute to the safety of cyclists, especially if they share the parking space with other vehicles, like in a large parking lot.

Our BDS Bike Cage is a freestanding structure. The bike storage cage has floor-to-ceiling 358 mesh security panel fencing made of mild steel tube. As a standard, our cage comes with a single leaf gate 1.3m wide with hasp and staple included in the price. The gate is hung upon 2 no box section gate posts bolted to the ground and is furnished with hinges and 1 lintel above the gate leaf. As a default, the gate is centre-hung to open outwards unless you specify you would like this otherwise.

Our bike storage cage is powder coated as standard. Additionally, legs are available for casting in or for bolting down.

The price comes to £145 per square metre.

Options

As said above, we offer our BDS Bike Cage with a centre-hung door which opens outwards, but a change is possible, so speak to us about it if you'd like to find out more about your options regarding this.

Additionally, we offer the cage ragged for casting in, or alternatively, you could have it ready for bolting down. Speak to us about this too.

Our bike storage cage comes with several different options for finish. You could have it as is – powder coated colour finish in a colour of your choice, galvanised, or galvanised and powder coated for additional strength.

Features

- Freestanding
- Mild steel tube made
- 358 mesh security panel fencing
- Comes with a gate as standard
- Add bike racks as an option
- Fixing options – ragged for casting in or flanged for bolting down
- Powder coated as standard
- Choice of RAL colours

Size Options: can be made to fit a specific space.

Additional requirements and bespoke work: please call to discuss any custom requirements.

Typical delivery time: 2 to 4 weeks.

Additional Information

Best Sellers M2	No
-----------------	----

Additional Options

Choose Finish	Powder Coated Colour Finish	£0.00
	Galvanised	£330.00
	Galvanised and Powder Coated	£330.00
RAL Colour Code	1023 Traffic Yellow	£0.00
	3000 Flame Red	£0.00
	5002 Ultramarine Blue	£0.00
	5017 Traffic Blue	£0.00
	6005 Moss Green	£0.00
	7015 Slate Grey	£0.00
	6024 Traffic Green	£0.00
	9005 Jet Black	£0.00
	9010 Pure White	£0.00
	Custom Colour	£220.00
Custom Colour		£0.00

