



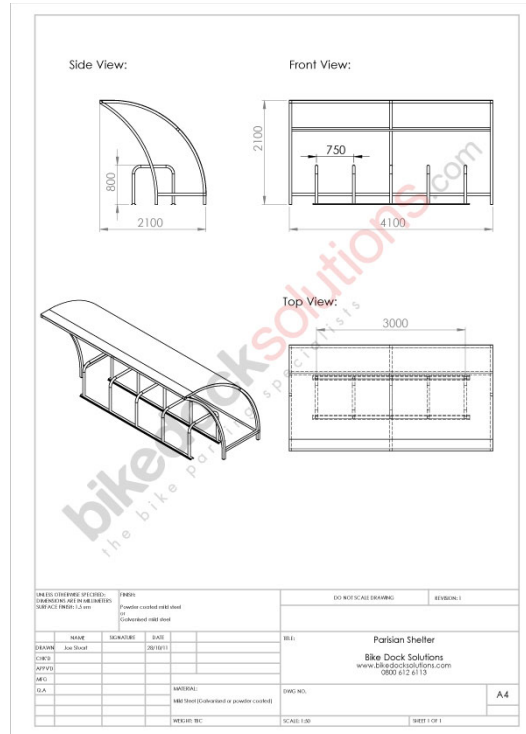
Parisian Cycle Shelter

Ex. VAT: £2,795.00 **TOTAL**
Inc. VAT: £3,354.00

*Base price, not including any custom options.

Product Images





Description

This Cycle Shelter available in a galvanised or powder coated RAL code colour finish with galvanised bike stands. Anti-climb roof and end frames with 3mm polycarbonate panels.

Specification

- No climb end frames with anti-vandal PET panels on roof and optional on the sides
- No crawl under perimeter
- Hot dipped galvanised or polyester powder coated to BS EN ISO 1461:1999 standard finish
- Single units can be placed alongside or opposite each other, to form larger cycle storage areas.
- Cycle Shelter comes with adjustable overground fixing feet
- Includes assembly bolts, expanding foundation bolts for concrete plinth and arrangement drawing for assembly
- This bike shelter can help contribute towards gaining ENE8 Cycle storage credits when used in the appropriate situation, under the Code for Sustainable Homes

Size Options

10 bike space PAR1 - H: 2100mm L: 4100mm W: 2100mm

20 bike space PAR2 - H: 2100mm L: 8100mm W: 2100mm

30 bike space PAR3 - H: 2100mm L: 12100mm W: 2100mm

Typical Delivery time: 2 to 3 weeks

Additional Information

Best Sellers M2	No
-----------------	----

Additional Options

Size Options	10 Bike Space	£0.00
	20 Bike Space	£1,247.40
Choose Finish	None	£0.00
	Powder coated colour	£200.00
	Galvanised	£330.00
	Galvanised and Painted RAL Colour	£330.00
RAL Colour Code	1023 Traffic Yellow	£0.00
	3000 Flame Red	£0.00
	5002 Ultramarine Blue	£0.00
	5017 Traffic Blue	£0.00
	6005 Moss Green	£0.00
	7015 Slate Grey	£0.00
	6024 Traffic Green	£0.00
	9005 Jet Black	£0.00
	9010 Pure White	£0.00
	Custom Colour	£220.00
Custom Colour		£0.00
Side Panels Option	No Polycarbonate Side panels	£0.00
	Polycarbonate Side panels	£440.00
Bolts Pack - Fixing and Assembly	None	£0.00
	Bolts Pack - Fixing and Assembly	£44.00

