



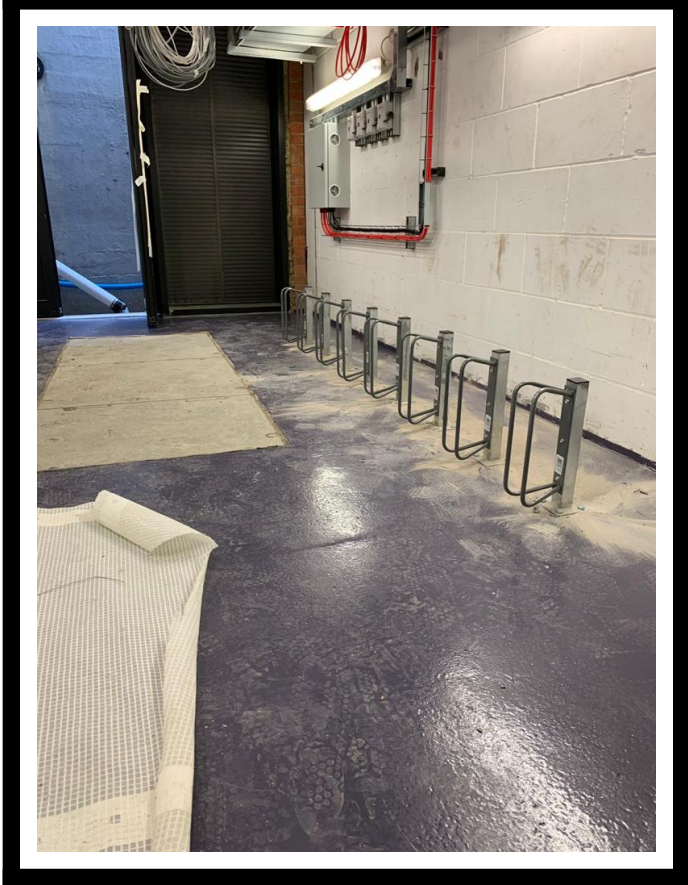
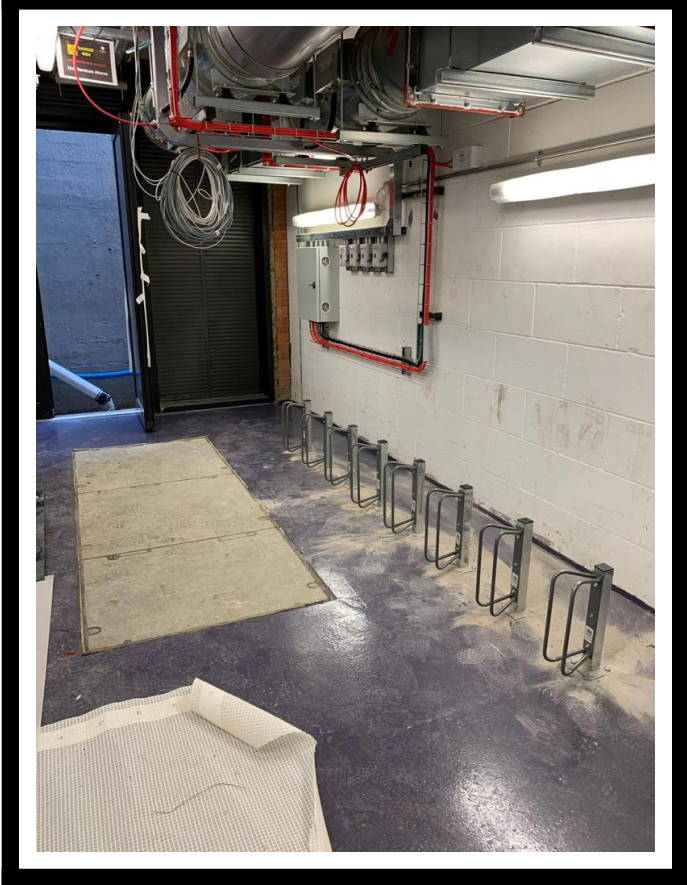
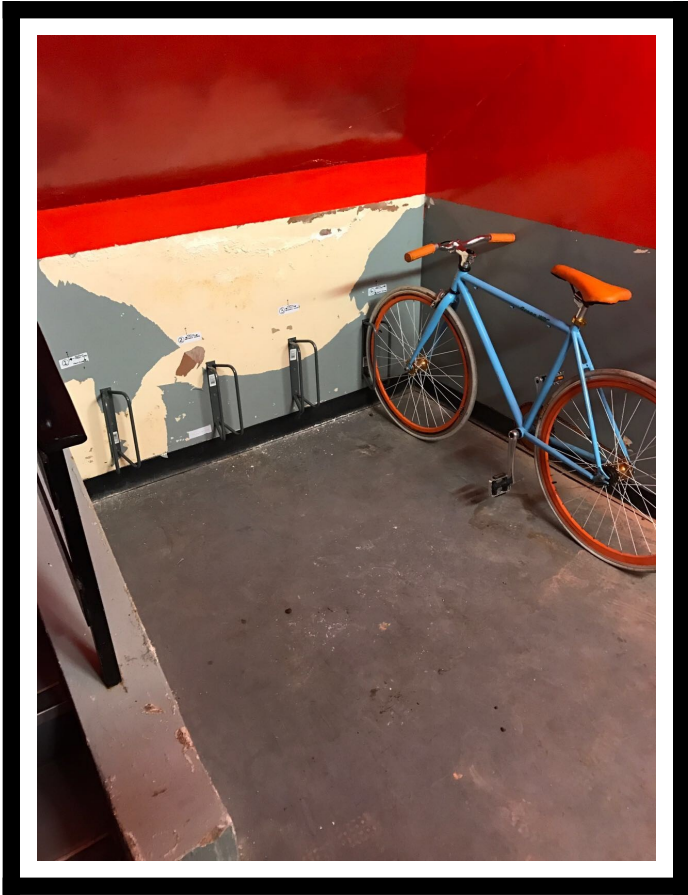
Fixed Butterfly Wall Mounted Bike Stand

Ex. VAT: £20.58 **TOTAL**
Inc. VAT: **£24.70**

*Base price, not including any custom options.

Product Images





Description

This is a simple and easy solution for bike parking, securely locking to the wheel of the bike to the frame of the rack. Great for both commercial and domestic properties.

Specification:

- Robust steel construction with corrosion resistant finish
- Perfect for road/ hybrid bikes with a max tyre width of 40mm
- Fixed with optional bolts into the wall)

Features:

- Two Angular Bars
- Evenly Spaced Wall Fixing Holes (3) Rigid
- Welded Construction

Dimensions:

- Overall Dimensions (After Mounting) - 315mm Height x 70mm Width x 136mm Depth (Approx)
- Distance Between Each Hole Center 106mm
- Hole Diameters 5mm

Delivery Time

- Typically 3-5 working days

Additional Information

Best Sellers M2	No
-----------------	----

Additional Options

Wall/Floor Mounting?	Wall Fixing (Standard)	£0.00
	Floor Fixing	£55.00
Fixing Bolts?	None	£0.00
	Fixing Bolts	£5.50

