



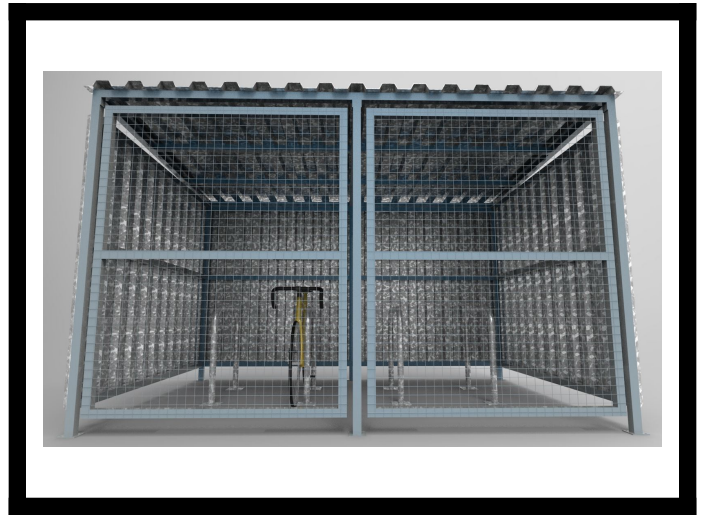
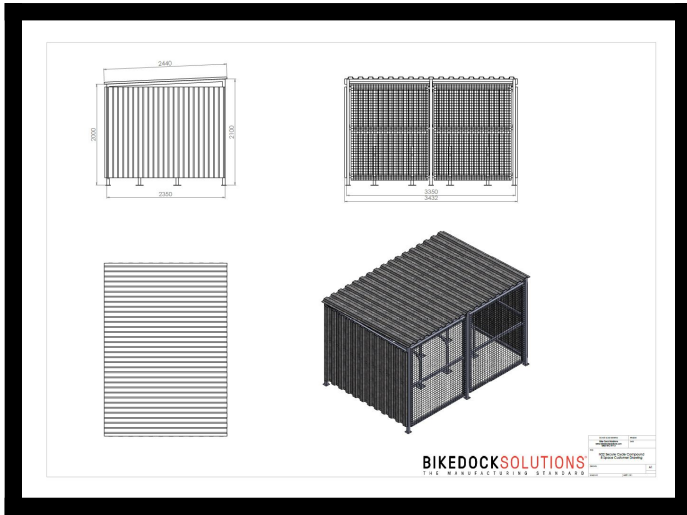
Secure Cycle Compound

Ex. VAT: £3,439.00 **TOTAL**
Inc. VAT: £4,126.80

*Base price, not including any custom options.

Product Images





Short Description

please call to discuss any bespoke requirements

Description

The Secure Cycle Compound is 'free standing', it can accommodate up to 8 bikes with our Traditional Sheffield stands as standard. This compound is floor fixed; legs are available for casting in or for bolting down.

Features

- Free standing with mild steel side & rear cladding.
- Frame is made of mild steel tube.
- Roof, Side & Back are galvanised Corrugated Steel Sheets (standard).
- Roof purlins, supports and connections of heavy duty steel.
- 4 Sheffield cycle stands for 8 bikes.
- Available ragged for casting in or flanged for bolting down.

Specification

- Height at front 2100mm
- Height at back 2000mm
- Length 3432mm
- Width at Base 2350mm
- Roof Width 2440mm
- Uprights of steel tube diameter 50mm x 50mm.

Typical delivery time: 5 weeks

Please call to discuss any bespoke requirements

Additional Information

Best Sellers M2	No
-----------------	----

Additional Options

Bike Stands	None	£0.00
	4 Galvanised Bike Stands (8 bikes)	£148.00
Finish Options	Powder Coated Colour	£0.00
	Galvanised	£440.00
	Galvanised and Powder Coated	£440.00
RAL Colour Code	1023 Traffic Yellow	£0.00
	3000 Flame Red	£0.00
	5002 Ultramarine Blue	£0.00
	5017 Traffic Blue	£0.00
	6005 Moss Green	£0.00
	7015 Slate Grey	£0.00
	6024 Traffic Green	£0.00
	9005 Jet Black	£0.00
	9010 Pure White	£0.00
	Custom Colour	£220.00
Custom Colour		£0.00
Bolts Pack - Fixing and Assembly	None	£0.00
	Bolts Pack - Fixing and Assembly	£55.00

